

## Technical Architecture Documentation for the Integrated HPLC API and Smart Laboratory Ecosystem

The digital transformation of analytical laboratory operations at Kalbe Nutritionals represents a sophisticated convergence of high-precision chemical instrumentation and advanced information systems. This technical report details the comprehensive architecture for the High-Performance Liquid Chromatography (HPLC) integration project, covering the hardware acquisition layer, the network topology, the API data interchange schema, and the overarching data integrity framework. By transitioning from manual data transcription to an automated, API-driven ecosystem, the facility has achieved a paradigm shift in operational efficiency and compliance reliability. Historically, the manual transfer of analytical results for vitamin quantification was characterized by significant time expenditure and the ever-present risk of human error. The integrated system described herein eliminates these bottlenecks by facilitating a direct, secure, and validated data flow from the Shimadzu LC-40 instruments to the centralized SmartLab repository, ensuring that every result is recorded in a manner that is attributable and accurate according to global regulatory standards.

### The Foundation of Analytical Precision: Hardware and Instrument Control

The architectural framework begins at the physical layer with the deployment of high-performance analytical hardware. The system utilizes Shimadzu LC-40 series units, which are engineered for maximum reliability in routine and complex liquid chromatography applications. These instruments are the primary engines of data generation, responsible for the chemical separation of vitamins from food matrices and their subsequent detection via UV-VIS spectroscopy.

The Shimadzu LC-40D solvent delivery pump is a core component of this layer, utilizing a parallel-type double plunger design with a stroke volume of approximately  $10 \mu\text{L}$ . This pumping mechanism is critical for maintaining a stable baseline, as it minimizes flow pulsation, which directly impacts the precision of peak integration—a key data field later extracted by the API. The pumps are designed to operate at pressures up to  $44 \text{ MPa}$  for routine applications, though the Nexera X3 variants can reach up to  $130 \text{ MPa}$ , allowing for the use of sub- $2 \mu\text{m}$  particle columns which enhance resolution and speed.

Technical control of these hardware modules is facilitated by the CBM-40 system controller. This unit acts as the communication hub, linking the pumps, autosamplers (SIL-40 series), and detectors (SPD-40 series) to the local workstation via Ethernet protocols. The autosampler logic is optimized for high throughput, with injection cycle times as low as  $6.7$  seconds and an injection volume accuracy of  $1 \mu\text{L}$ . This hardware-level accuracy is the prerequisite for the "Original" and "Accurate" principles of the  $\text{ALCOA}^+$  framework, as the data integrity chain begins at the moment of sample aspiration and delivery to the column.

Component Category	Specific Hardware Model	Technical Specification	Functional Role
System Controller	CBM-40 CL	Ethernet-based modular hub	Centralized module synchronization

<b>Component Category</b>	<b>Specific Hardware Model</b>	<b>Technical Specification</b>	<b>Functional Role</b>
<b>Solvent Delivery</b>	LC-40D XR	Parallel double plunger, 70 MPa	Precise mobile phase flow control
<b>Autosampler</b>	SIL-40C XR	\$0.1\$ to \$50 \mu L\$ injection volume	Automated high-speed sample loading
<b>Detector</b>	SPD-40 (UV-VIS)	\$190\$ to \$700 nm\$ wavelength	Real-time analyte quantification
<b>Column Oven</b>	CTO-40C CL	Forced air circulation, \$85^{\circ}\$C	Thermal stability for retention time

### **Network Topology and Data Routing Infrastructure**

The technical architecture is distributed across four logical and physical zones to ensure security, high availability, and optimal traffic management. The network uses a tiered approach to isolate the analytical subnet from the broader corporate environment while maintaining a bridge for data utilization via a managed gateway.

#### **The Lab Instrument and Acquisition Layer**

In the Lab Instrument Area, the three HPLC units are connected to dedicated workstations (PC HPLC 1, 2, and 3) through point-to-point Ethernet connections. These PCs run the Chromatography Data System (CDS) software, typically Shimadzu LabSolutions, which manages the real-time acquisition of detector signals. The workstations act as the first line of data processing, where raw analog signals are converted into digital chromatograms and peak integration is performed.

Each PC is assigned a static IP address within the local laboratory subnet (\$10.192.168.1.X\$) to ensure persistent connectivity to the centralized HPLC server. This subnet is isolated to prevent unauthorized access and to ensure that the heavy data traffic generated during long analytical runs does not suffer from latency issues.

#### **The Centralized Server and Gateway Layer**

The Server Area contains the primary infrastructure responsible for long-term data storage and API hosting. The Server HPLC (IP: \$10.192.168.1.10\$) functions as the master database for all three instruments, hosting the HPLC parameter database and the API service. This server is configured with RAID-based storage (typically RAID 10) to ensure high availability and data redundancy, satisfying the "Enduring" and "Available" requirements of \$ALCOA+\$.

The connection between the lab instrument subnet and the administrative server area is bridged by a secure gateway (IP: \$10.XXX.XXXXXX\$). This gateway implements strict firewall rules, allowing only the necessary SQL and HTTP/REST traffic to pass between the HPLC server and the SmartLab

Server (SHP). This architectural decision ensures that even if the administrative network is compromised, the analytical instruments remain protected within their isolated subnet.

<b>Network Node</b>	<b>Logical Area</b>	<b>IP Address</b>	<b>MAC Address</b>	<b>Access Protocol</b>
<b>HPLC Server</b>	Server Area	10.XXX.XXX.XXX	XX.XX.XX.XX.XX.XX	SQL / REST API
<b>PC HPLC 1</b>	Instrument Area	10.XXX.XXX.XXX	XX.XX.XX.XX.XX.XX	Local LAN
<b>PC HPLC 2</b>	Instrument Area	10.XXX.XXX.XXX	XX.XX.XX.XX.XX.XX	Local LAN
<b>PC HPLC 3</b>	Instrument Area	10.XXX.XXX.XXX	XX.XX.XX.XX.XX.XX	Local LAN
<b>SHP Server</b>	Server Area	10.XXX.XXX.XXX	XX.XX.XX.XX.XX.XX	HTTPS / SSL
<b>Gateway</b>	Bridge Zone	10.XXX.XXXXXXX	XX.XX.XX.XX.XX.XX	Routing / Firewall

### **The Administrative Access Layer**

The Lab Admin Area consists of workstations used by personnel to access the SmartLab web application via standard HTTPS protocols. By leveraging a browser-based interface (<https://smartlaboratory.kalbenutritionals.com/>), the architecture eliminates the need for software installation on individual client PCs, reducing the maintenance burden and ensuring that all users interact with the same version of the application logic.

### **API Technical Specification and Data Interchange Schema**

The core of the integration is the API Database HPLC, which serves as the bridge between the KMI acquisition scope and the SHP utilization scope. The API is implemented as a RESTful service that queries the centralized SQL database on the HPLC server and returns analytical results in a standardized JavaScript Object Notation (JSON) format.

### **Data Acquisition Scope (KMI)**

The KMI team was responsible for the "Data Acquisition" phase, which is now classified as complete. This involved the development of the database schema capable of capturing all relevant

chromatography parameters for the three connected HPLC machines. The acquisition logic ensures that as soon as a batch is processed and validated within LabSolutions, the peak integration data (retention time, area, height) is automatically pushed or made available to the API layer. This automation is a critical control for "Contemporaneous" recording, as it removes the time gap between analysis and documentation.

### API Endpoints and Request Logic

The API supports two primary query methods to accommodate different laboratory workflows:

1. **Request by Sample Name:** This endpoint is utilized for specific sample lookups. When an analyst opens a sample record in SmartLab, the system sends a GET request with the sample identifier (e.g., GVN-MN0725-00156).
2. **Request by Project Name:** This endpoint allows for bulk data retrieval based on project codes or analytical batches. This is essential for generating project-wide reports or performing trend analysis across multiple injections.

### The JSON Response Schema

The JSON payload structure was designed to provide a comprehensive snapshot of the analytical event, ensuring that the target fields in SmartLab are populated with high-fidelity data.

JSON Key	Data Type	Example Value	Business Logic / Significance
success	Boolean	true	Status of the database query execution.
message	String	Get Result...	Diagnostic message for error handling.
instrumentName	String	LC-40 SPD	Ensures traceability to the specific hardware.
sample	String	GVN-MN0725-00156	Primary key for sample identification.
parameter	String	Fat Soluble Vitamin A	Identifies the analyte being quantified.
retTime	Float/String	2,883	Retention time; used for peak identification.

JSON Key	Data Type	Example Value	Business Logic / Significance
area	Float/String	49153,467	Integrated peak area for quantification.
height	Float/String	3348,606	Peak height; secondary quantification check.
conc	Float/String	348900,231	Calculated concentration result.
unit	String	Iu/1000	Units for the concentration value.
name	String	VIT A	Standardized analyte name.

This schema ensures that all raw data and calculated results are transferred without manual intervention, fulfilling the "Accurate" and "Complete" criteria of the \$ALCOA+\$ framework. The retention of metadata, such as the instrumentName, provides an immutable audit trail for each record.

### Data Utilization Layer: SmartLab and CIELA Integration

The SHP scope focuses on the "Data Utilization" phase, which involves the development of the Web SmartLab interface and the integration of the HPLC API data into the CIELA ecosystem. CIELA, which stands for Centralized and Integrated E-logbook for Laboratory Analysis, functions as the primary platform for laboratory management and reporting.

### Sample Lifecycle Management in CIELA

The CIELA technical architecture manages the sample journey through a series of logical modules, from registration to final report generation.

1. **Sample Registration:** Samples are registered into the system, often via integration with an ERP (Oracle), receiving a unique identifier that follows them through the analytical process.
2. **Preparatory Analysis (Prep Analysis):** This module allows analysts to organize samples into unique pooling IDs. The architecture supports complex logic for parameters like RTS (Cleaning Verification), where the system must split parameter strings (e.g., YM.G1.1.1) into distinct sampling points and analytes.
3. **Start Analysis:** Upon clicking the "Start Analysis" button, the system records a timestamp, marking the transition from preparation to active analytical work. This step effectively "locks" the sample metadata, preventing unauthorized changes during the analysis phase.
4. **Result Input:** This module is where the HPLC API is consumed. SmartLab calls the API to fetch results, which are then displayed alongside the manual entry fields for other tests. The system also includes a "Counting Assistance" tool to help read Petri dish results for microbiological assays.

## Specialized Logic for High-Integrity Assays

The CIELA architecture includes specialized e-logbook modules designed to handle complex data structures while maintaining absolute data integrity.

**The Duplo E-Logbook Logic:** For assays requiring duplicate analysis (Duplo), the architecture prevents the direct entry of an average result. Instead, the system provides separate fields for Result 1 and Result 2. The application logic then automatically calculates the mean:

$$\text{Final Result} = \frac{\text{Result 1} + \text{Result 2}}{2}$$

This data is "saved as draft" and passed back to the main input menu, ensuring that the calculation is transparent, reproducible, and compliant with "Accurate" data integrity standards.

**The Bifidobacterium Quantification Logic:** For microbiological quantification, the e-logbook architecture dynamically adjusts the input interface based on the dilution levels selected by the user ( $10^1$  to  $10^9$ ). The system calculates the actual colony counts based on the volume and dilution factor, then averages these counts to provide the final concentration. This automated calculation logic removes the risk of manual mathematical errors, which are frequent in manual laboratory environments.

**Suspect Result Workflow:** In instances where a result is suspect or outside of expected ranges (Out of Specification - OOS), the architecture provides a dedicated "Suspect Result" interface. This module triggers an automated email helper that notifies the customer (e.g., SHP, TPP, or KNS) that the sample is under re-check. The email template includes a confirm date (H+2 from the current date), ensuring transparency and maintaining a documented record of the investigation process.

## Data Integrity Framework: Implementing ALCOA+ in Technical Architecture

The HPLC digitalization project is grounded in the ALCOA+ framework, which is the gold standard for data integrity in regulated life science industries. The technical architecture implements specific controls to satisfy each component of this framework.

### Attributable: Who, When, and Why

The system ensures that every action is linked to a verified user through the integration of an employee data API (QAAC) for authentication. No generic or shared accounts are permitted, and all actions—from instrument initialization to result approval—are logged with a unique user ID and a synchronized timestamp. Electronic signatures are mandatory for critical data transitions, such as the final approval of an Analytical Request Form (ARF).

### Legible, Permanent, and Consistent

By moving from paper notebooks to a SQL database architecture, the facility has ensured that records remain readable and clear indefinitely. The use of standardized JSON schemas for data interchange ensures that the data is interpreted consistently by both the HPLC and SmartLab servers. Furthermore, the system enforces standardized templates for data entry, ensuring that all required metadata (e.g., oven temperature, lot numbers) is captured for every injection.

### Contemporaneous and Original

The API-driven architecture ensures that data is recorded at the moment it is generated. Instrument workstations are synchronized via a central Network Time Protocol (NTP) server to prevent backdating of analytical runs. The "Source of Truth" is maintained in the HPLC database, which stores the original chromatograms and raw integration data. Any subsequent reprocessing of data is recorded as a new version in the audit trail, preserving the original record as per regulatory requirements.

### Accurate and Complete

The elimination of manual data transfer through the API is the primary mechanism for ensuring accuracy. Additionally, the system is designed to be "Complete," meaning it captures and retains all analytical data, including failed injections, re-runs, and system suitability tests. This prevent "data cherry-picking" or the omission of unfavorable results, which is a common regulatory citation in manual systems.

<b>ALCOA+ Principle</b>	<b>Technical Implementation</b>	<b>Architectural Significance</b>
<b>Attributable</b>	QAAC API Login / Role-Based Access	Traceability of every action to a verified user.
<b>Legible</b>	Structured SQL Databases	Permanent and readable record independent of handwriting.
<b>Contemporaneous</b>	NTP Time Sync / Automated Data Upload	Real-time recording of activities; no backdating.
<b>Original</b>	Immutable Audit Trails / Raw Data Retention	Preservation of the primary record of truth.
<b>Accurate</b>	Direct API Data Transfer	Elimination of transcription and mathematical errors.
<b>Complete</b>	Mandatory Data Fields / OOS Capture	Retention of all results, including failures and metadata.
<b>Consistent</b>	Validated Analytical Methods	Standardized execution of tests across all analysts.
<b>Enduring</b>	RAID 10 Storage / Automated Backups	Long-term data survival against hardware failure.

<b>ALCOA+ Principle</b>	<b>Technical Implementation</b>	<b>Architectural Significance</b>
<b>Available</b>	Browser-based SmartLab / Rapid Search	Instant data retrieval for audits and investigations.

### **Auxiliary Systems: Reagent Lifecycle Management with SUMASYS**

A critical but often overlooked aspect of analytical architecture is the management of the physical reagents and media required for analysis. The SUMASYS (Supply Management System) was developed as an internal digitalization initiative to optimize reagent tracking and reduce "deadstock" values.

### **SUMASYS Architectural Logic and Web Integration**

SUMASYS is a web-based application built using PHP and integrated with a centralized SQL database. It replaces a manual, spreadsheet-based tracking system that was prone to inaccuracies and delayed updates. The system architecture is centered on a "Barcode Implementation" strategy, where every reagent or media item is scanned upon receipt and usage.

The business logic of SUMASYS is designed for real-time inventory calculation. It uses a minimum/maximum stock formula based on monthly laboratory needs to determine when re-stocking is required:

- **Min Stock:** The threshold level that triggers a Purchase Request (PR) alert.
- **Max Stock:** The ceiling level to prevent over-purchasing and reduce deadstock value.
- **PR Calculation:** The system automatically calculates the quantity needed to reach the max stock level, ensuring that procurement is data-driven.

### **Impact on Operational Visibility**

The SUMASYS dashboard provides real-time visualization of stock status across all sub-labs (Micro, CPO, CI). Items are color-coded as "Berlebi" (Excess), "Aman" (Safe), or "Need PR" (Re-stock required). This visibility has transformed the weekly stock opname process, reducing the time required from 405 minutes to just 36 minutes—a 91% increase in productivity. Furthermore, by monitoring expiration dates (ED) through the dashboard, the facility has implemented a "First Expired, First Out" (FEFO) strategy, minimizing waste and ensuring that only compliant reagents are used in HPLC analysis.

<b>Efficiency Metric</b>	<b>Before SUMASYS (Manual)</b>	<b>After SUMASYS (Digital)</b>	<b>Improvement (%)</b>
<b>Weekly Stock Opname</b>	405 Minutes	36 Minutes	91% Reduction

Efficiency Metric	Before SUMASYS (Manual)	After SUMASYS (Digital)	Improvement (%)
Monthly Labor Hours	~27 Hours	~2.4 Hours	91% Reduction
Data Accuracy	Low (Spreadsheet errors)	High (Barcode-verified)	Significant
Waste Risk	High (ED monitoring gaps)	Low (FEFO automation)	Significant
Deadstock Value	694 Million IDR (2024)	Trending Down (Target 20%)	Targeted Improvement

#### Technical Maintenance and Future Reliability Protocols

The stability of the technical architecture is maintained through a series of routine maintenance and reliability protocols. These ensure that the system performs consistently and meets its intended use throughout its lifecycle.

#### Hardware Maintenance and Calibration

The Shimadzu LC-40 units require periodic maintenance to ensure analytical accuracy. The SmartLab system tracks the calibration schedules for all instruments and sends alerts to laboratory supervisors ahead of the due dates. This includes routine tasks like replacing pump seals, lamp replacement for the UV-VIS detector, and needle cleaning for the autosampler. All maintenance activities are documented within an electronic logbook, providing a comprehensive performance history for each instrument.

#### API and Database Health Checks

The IT department performs regular health checks on the API and the underlying SQL databases. This includes monitoring API response times to ensure that the "Request by Sample Name" queries remain near-instantaneous as the database grows. SQL performance tuning, such as index optimization and query refactoring, is performed periodically. Database integrity checks are automated to detect any signs of data corruption early.

#### Security and Disaster Recovery

The system utilizes a "defense-in-depth" security model. In addition to the network isolation and employee API authentication already discussed, the architecture includes:

- **SQL Encryption at Rest:** All analytical data stored in the HPLC and SmartLab databases is encrypted to protect against unauthorized physical access to the server hardware.
- **Redundant Backups:** Daily snapshots of the databases are taken and stored on secondary physical nodes or encrypted cloud storage.

- **Disaster Recovery (DR) Testing:** The laboratory maintains documented DR protocols, specifying the Recovery Time Objective (RTO) and Recovery Point Objective (RPO) required to restore operations after a catastrophic failure.

### Future Architectural Advancements

The current technical architecture is designed to be scalable and evolvable, providing a foundation for future Industry 4.0 initiatives.

### Advanced Analytics and Machine Learning

Future iterations may incorporate "Advanced Analytics 2.0" or AI-driven processing tools. These models could be applied to HPLC chromatograms to automate the peak selection and integration process, further reducing the reliance on human judgment and enhancing consistency across different analysts. AI algorithms could also be used for anomaly detection, flagging "suspect results" before they are even retrieved by the SmartLab API.

### Enhanced ERP Integration

The long-term roadmap includes a deeper integration between SUMASYS and the Oracle ERP system. This would allow for the automated generation of Move Orders (MO) and Purchase Requests (PR) within the ERP based on the real-time stock levels calculated by SUMASYS, creating a truly closed-loop supply management system.

### Cloud Transition

While the current architecture is primarily on-premise for maximum security and low latency, the LabSolutions and SmartLab systems are compatible with Infrastructure-as-a-Service (IaaS) deployments. A transition to a hybrid or full cloud environment (e.g., AWS or Azure) would provide the facility with greater flexibility for remote data access and cross-site collaboration.

### Technical Summary of Integration Outcomes

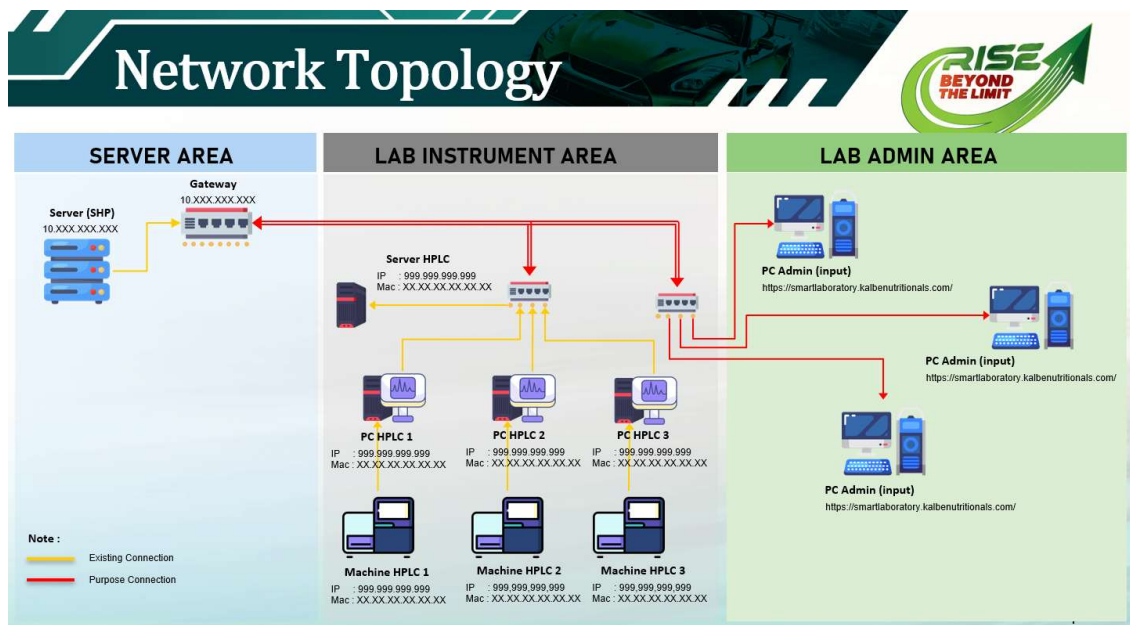
The technical architecture for the HPLC API integration and SmartLab digitalization project has achieved all of its primary objectives. By creating a unified ecosystem where hardware, network, and application layers are seamlessly integrated, the facility has established a benchmark for modern laboratory operations.

Operational Metric	Manual Era (Before)	Automated Era (Done)
Data Integrity Level	Baseline (Manual risks)	\$ALCOA+\$ Compliant (High)
Result Transfer Speed	15 mins per 30 samples	< 1 second (Instant)
Transcription Error Rate	Potential for human error	0% (API-driven)

Operational Metric	Manual Era (Before)	Automated Era (Done)
Audit Trail Depth	Fragmented (Paper/Local)	Unified (Centralized/System-wide)
Operational Efficiency	Analyst time heavy	System-driven (Analyst focused)

The successful integration of the Shimadzu LC-40 units with the SmartLab/CIELA reporting environment has created a defensible, high-throughput analytical framework. This architecture not only ensures the accuracy of vitamin quantification in food samples but also secures the organization's competitive advantage by maintaining the highest standards of data integrity and regulatory compliance. Through the implementation of automated data acquisition, intelligent utilization gates, and centralized inventory management, the laboratory is now fully equipped to meet the demands of a complex and increasingly digital scientific landscape.

### Screenshot documentation

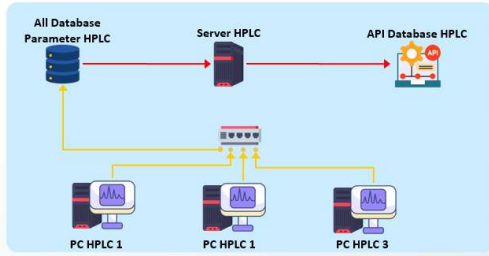


# Scope Project

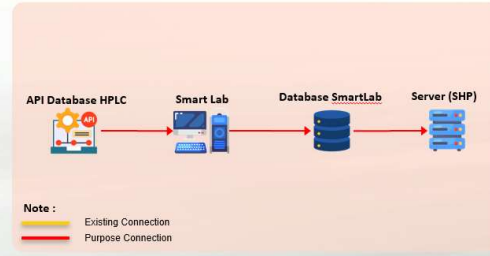


Working scope KMI and SHP Team.

## 1. KMI Scope

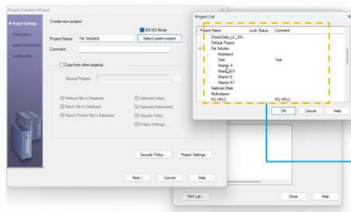


## 2. SHP Scope



### ✓ Data Acquisition KMI Scope (Done)

#### ➤ Application Interface



Project Name & Parameter Name

#### ➤ Structured Query Language

```

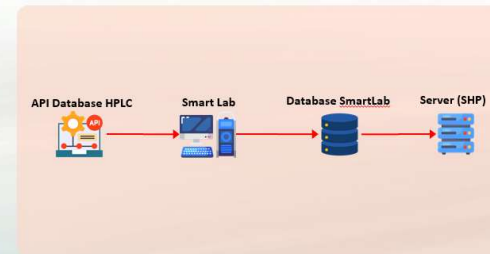
{
  "success": true,
  "message": "Get Result Sample Successfully",
  "data": {
    "InstrumentName": "LC-40 SPD",
    "sample": "GVN-MW0725-00150",
    "parameter": "Fat SolubleVitamin A",
    "retTime": "2,883",
    "area": "49153,467",
    "height": "3348,000",
    "conc": "348900,231",
    "unit": "IU/1000",
    "name": "VIT A"
  }
}
    
```

- Request by Sample name
- Request by Project Name
- Result (Target Field)

### ✓ Data Utilization SHP Scope (In-Progress)

#### ➤ Development Web SmartLab

Integrasi data dari HPLC menggunakan API yang sudah disediakan akan didvelop oleh IT KN.



# Step Data Utilization



#### ➤ Data Acquisition

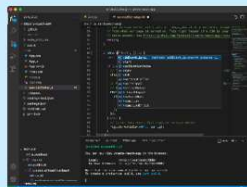
Pengambilan data dari HPLC sesuai yang dibutuhkan dituangkan melalui API.

```

{
  "success": true,
  "message": "Get Result Sample Successfully",
  "data": {
    "InstrumentName": "LC-40 SPD",
    "sample": "GVN-MW0725-00150",
    "parameter": "Fat SolubleVitamin A",
    "retTime": "2,883",
    "area": "49153,467",
    "height": "3348,000",
    "conc": "348900,231",
    "unit": "IU/1000",
    "name": "VIT A"
  }
}
    
```

#### ➤ Data Processing

Data yang sudah disiapkan melalui API di consume (diolah) di SmartLab.



#### ➤ Data Visualization

Setelah pengolahan data maka result akan ditampilkan di web SmartLab.

